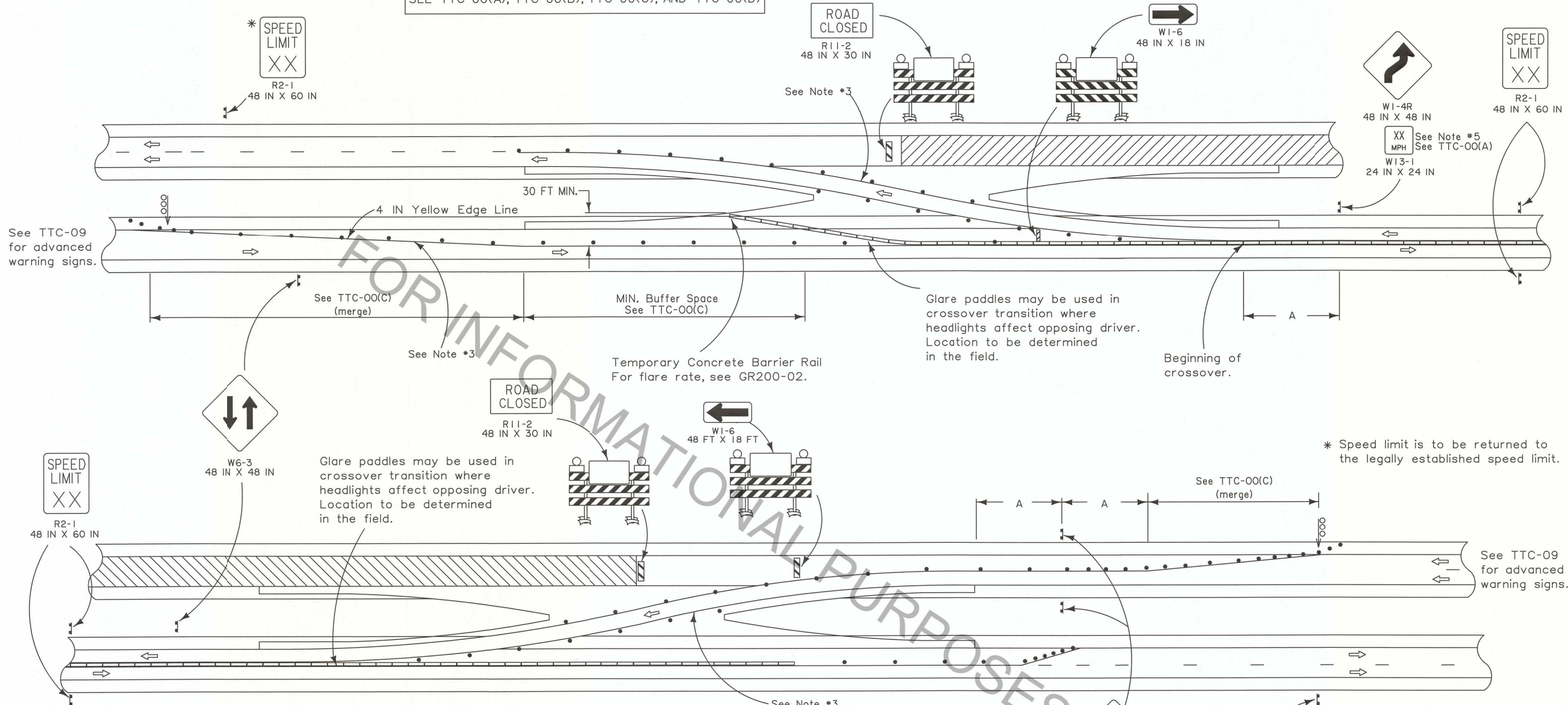


SEE TTC-00(A), TTC-00(B), TTC-00(C), AND TTC-00(D)

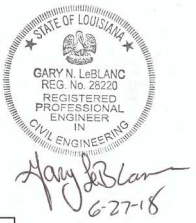


NOTES

- This sheet shall be used with Temporary Traffic Control General Notes Sheets TTC-00(A), TTC-00(B), TTC-00(C), and TTC-00(D).
1. This layout represents the minimum traffic controls required for median crossovers on divided highways. For advance signing see TTC-00(D) and TTC-09.
 2. For posted speed limits prior to construction that are greater than 45 mph, concrete barriers shall be required to separate the lanes of travel. For posted speed limits prior to construction that are 45 mph or less, concrete barriers may be substituted by tubular markers or flexposts.
 3. Temporary raised pavement markers spaced at 15 FT C/C shall be used to supplement the white and yellow temporary edge lines through the reverse curves of the crossover. All temporary edge lines between the barrier rail and the beginning of the lane reduction taper shall have temporary raised pavement markers spaced at 15 FT C/C.
 4. When traffic controls are planned to be in place for more than 3 days, conflicting pavement markings shall be removed and temporary markings added.
 5. Advisory speed plaques (W13-1) shall be required if the difference between the speed limit prior to construction and the advisory speed (determined by an engineering study performed by the DTOE) is 10 mph or greater.

SPEED LIMIT (prior to construction)	SPACING
25 mph	63 FT
30 mph	90 FT
35 mph	123 FT
40 mph	160 FT
45 mph	270 FT
50 mph	300 FT
55 mph	330 FT

ALL TTC STANDARDS SHOW MINIMUM CONSTRUCTION SIGNING.
 ALL SITUATIONS SHALL BE REVIEWED AND/OR DESIGNED BY THE ENGINEER.
 CONTRACTORS ARE RESPONSIBLE FOR COMPLYING WITH ALL TTC STANDARDS.



* Speed limit is to be returned to the legally established speed limit.

- LEGEND**
- Traffic Sign
 - Channelizing Devices
 - Type III Barricades
 - Flashing Arrow Board (Type 'C')
 - Work Area
 - Concrete Barrier
 - Type B Light
 - Direction of Travel

SHEET NUMBER

DATE: 7/2/18

REVISION OR CHANGE ORDER DESCRIPTION

BY: [Signature]

APPROVED BY: [Signature]

CHIEF ENGINEER

NO.

DATE

DESIGNED BY: G. LEBLANC

CHECKED BY: J. COLVIN

PARISH

CONTROL SECTION

STATE PROJECT

SERIES NUMBER

CHECKED BY: C. FAKOURI

CHECKED BY: G. LEBLANC

PROJECT

TEMPORARY TRAFFIC CONTROL FOR MEDIAN CROSSOVER ON DIVIDED HIGHWAYS

TTC-08

DOTD TRAFFIC ENGINEERING